

Press Release

CS Caritas Socialis

January 2024

Contact

Mag. Sabina Dirnberger-Meixner, MBA
Oberzellergasse 1, 1030 Vienna
01/717 53-3131
sabina.dirnberger@cs.at

Table of Contents

1	Origins and Goals	2
2	Statistics, Data and Facts	4
3	Our Mission: Being Cared for in Dignity – Living on One’s Own	4
4	Hospice and Palliative Care	5
4.1	CS Hospice Rennweg	6
4.1.1	Six Facilities Under One Roof	6
4.2	Hospice vs. Palliative Unit	9
4.3	Financing of CS Hospice Rennweg	9
4.4	Hospice Culture and Maieutics	10
5	Care and Support	10
5.1	Focus on Dementia	11
5.2	Focus on Multiple Sclerosis	12
6	Families and Children	14
6.1	CS Kindergarten	14
6.2	CS Home for Mother and Child (MUKI)	15
7	Overview of facilities at CS Caritas Socialis	15
7.1	Hospice and Palliative Care – 01/717 53-3220	15
7.2	Care and Support – 01/717 53-3800	15
8	Milestones at CS	16
9	Organizational Chart (German)	22
10	Legal Organizational Chart (German)	23

1 Origins and Goals

CS Caritas Socialis was founded in 1919 by Hildegard Burjan as a religious Christian sisterhood with the mission to relieve social distress. Tackling current social problems at their root and "the courage to try new things" – that's what Hildegard Burjan was all about, and that's what CS Caritas Socialis is still all about to this day. This ultimately means: building a foundation for long-term aid and betterment instead of simply providing acute support.

The sisters have created a number of social institutions over the years. Today, CS runs three nursing centers, kindergartens and relief/counseling facilities, a home for mother and child and last but certainly not least, CS Hospice Rennweg, which combines six establishments under one roof. In addition, care is also provided in the form of home help and home nursing. The counseling services, the social service as well as the house for mother and child are run by the sisterhood.

Clerical sisters, staff and volunteers + financial support and donations = CS Caritas Socialis

In all CS institutions, spiritual sisters and secular staff work together and share responsibility. Volunteers and friends support CS in its effort. To a large extent, the work of CS Hospice Rennweg is made possible by generous donors and supporters.

Specialized care and support

According to our mission, CS Caritas Socialis focuses on three main priorities:

- Hospice and Palliative Care
- Care and support
 - Integrative and stationary care
 - Care for people with dementia and Alzheimer's
 - Care for people with multiple sclerosis
- Children and families
 - CS Kindergarten
 - Aid and counseling facilities for socially disadvantaged people
 - CS House for Mother and Child (MUKI)

Integrative and Stationary Care

CS Caritas Socialis offers care and support services from a single provider:

- Home Care (home help, visit and cleaning services, and home care)
- Daytime Care in CS Day Centers (multiple sclerosis day center, Alzheimer day centers, day centers for seniors)
- Full Time Care in the living quarters (long-term care, neurological long-term care, living quarters for people with dementia)
- CS Shared Housing for people with dementia
- CS House for Mother and Child (MUKI)
- CS Counseling Services (social relief and counseling service of the CS Sisterhood for people in need)

CS Caritas Socialis GmbH and CS Caritas Socialis Privatstiftung

All facilities of CS Caritas Socialis GmbH are part of CS Caritas Socialis Privatstiftung. Some facilities are funded by the Fonds Soziales Wien (FSW). The CS Caritas Socialis Privatstiftung exclusively pursues the non-profit purpose of securing the continued existence of the facilities of CS Caritas Socialis GmbH.



CS Caritas Socialis GmbH

Managing director

Mag. Robert Oberndorfer, MBA



CS Caritas Socialis Privatstiftung

Chairperson

Sr. Susanne Krendelsberger CS

2 Statistics, Data and Facts

12.871 people were advised, looked after and assisted by CS Caritas Socialis in 2023. Of these, 5.102 were cared for in our facilities and at home, and 7.769 counseling sessions were held.

Staff of CS Caritas Socialis

834 Employees

537 Unsalaries workers

380 Interns

40 Civil service workers

Additional statistics, data and facts about CS Caritas Socialis can be found in the "Zahlen, Daten, Fakten" edition of our "Augenblicke" annual report.

3 Our Mission: Being Cared for in Dignity – Living on One's Own

CS Caritas Socialis is the non-profit private foundation including all its facilities, set up by the religious Christian sisterhood Caritas Socialis. We are committed to safeguarding the dignity of the people we care for, maintaining a high degree of their self-esteem and to respectfully handle their lives and mental attitudes. With the broad range of products we offer, we ensure the highest quality of life for the people who need our support the most. The ultimate goal is to not only improve the life of the people we care for, but also the life of their relatives and loved ones.

Continuing the tradition of our founder Hildegard Burjan, we promote awareness to implement solidarity in society. State subsidies as well as private support through donations or voluntary work are necessary for a non-profit. As a non-profit organization, it is important to us that our services be financially affordable for all people. The high quality of our services results from the close cooperation between our clients, the employees and volunteers as well as relative of the people we accompany. Growing acceptance in society and in political/private areas, as well as rising trust of sponsors and donors in our cause are critical to financially secure our continued existence.

We currently focus the following three priorities:

1. SUPPORT AND CARE (FOCUSED ON PEOPLE WITH DEMENTIA)

People in need of care, elderly people, chronically ill patients and people with dementia want to lead a life that's as normal as possible. We accompany these people by promoting areas of feebleness, without overstraining. Enabling a high degree of self-determined participation and inclusion in society is key to living a healthy life, so we promote these aspects as well. The care of people with dementia needs comprehensive, systematic support from society, which is another key concern of ours.

2. HOSPICE CULTURE

Quality of life until the end of life results from best-in-class, gentle pain treatment, professional care and support as well as psychosocial and pastoral accompaniment. We offer our clients a multiprofessional team that accompanies critically ill people and their relatives in the last part of their lives.

3. SUPPORT AND ACCOMPANIMENT OF FAMILIES AND CHILDREN

In the CS house for mother and child, our motto is: "Help me to do it myself". We live up to that slogan by enabling single mothers and their children to build a life in independence. In CS Kindergarten, we promote solidarity among children. Our CS care and social centers are a place of life for all generations. Children, adolescents, senior citizens, relatives and employees learn from each other and with each other.

4 Hospice and Palliative Care

„Mindfully giving space and time to the preciousness of life, even when facing death“

PURPOSE QUEST

For more than 30 years, CS Caritas Socialis has endeavored to improve the quality of life at the end of life. A milestone was set with the introduction of the first Mobile Palliative Team in Vienna. Today, the idea of palliative care is deeply anchored in all stationary and mobile facilities of CS Caritas Socialis, even beyond the CS Hospice Rennweg.

4.1 CS HOSPICE RENNWEG

The CS Hospice Rennweg (which includes 6 facilities under one roof) cares for severely ill people with advanced, incurable illness and limited life expectancy. Critically ill people and their relatives experience intensive personal care until the very end.

Enabling a life in dignity and security up until the end is the ultimate purpose of CS Hospice Rennweg. An experienced team of doctors, caretakers, counselors, therapists and volunteers individually look after every patient (although we prefer to call them guests).

2017: Remodeling at CS Hospice Rennweg - Hospice needs #moreSpace

In 2017, CS Hospice Rennweg was remodeled under the motto "Hospice needs #moreSpace": All double rooms have been converted into single or family rooms. A sofa bed in each room and an additional guest room make it possible for relatives and close friends to stay overnight.

Two farewell rooms called "Rooms of Silence" give relatives space and time to say goodbye to their loved ones. Experiencing weightlessness for a brief moment is now a possibility in our new barrier-free wellness baths. Enlarged residences and offices upgrade the quality of life for hospice guests and their relatives as well as improving the working conditions of the Hospice's 56 employees and 93 volunteers.

More info and a quick look into the new CS Hospice Rennweg can be found [here](#).

4.1.1 Six Facilities Under One Roof

Counseling center

The counseling center of the CS Hospice Rennweg coordinates all facilities of the CS Hospice Rennweg. It is the first facility to contact ...

- for those affected and their relatives as well as professionals in the health sector.
- for questions about the care and support of the seriously ill and dying.
- as support for advice seekers in decision-making situations.
- to jointly develop problem-solving strategies with the participants.

What costs are incurred for the consultation?

The use of a consultation is free of charge.

Mobile Palliative Team

The experts of the Mobile Palliative Team (certified nurses, physicians, mental health workers, social workers and physiotherapists) care for seriously ill people who want to stay at home, wait for a place at the hospice or in our palliative care unit or continue their care if someone wants to leave stationary care and transfer back to their home. The Mobile Palliative Team takes care of terminally ill people until the very end right in their homes, it relieves with optimal pain therapy and professional care, accompanied psychosocial and spiritual support and it supports in the organization of everyday life.

The Mobile Palliative Team is complementary to the counseling service and also provides advice to critically ill people.

What costs are incurred for the people being cared for?

All palliative services are offered free of charge.

The Stationary Palliative Care Unit

The stationary palliative care unit in the CS Hospice Rennweg cares for critically ill people with limited life expectancy, who, according to human judgment, can no longer be cured. Pain therapy, nursing and psychosocial and spiritual accompaniment are guaranteed by a team of experts. The CS Hospice Rennweg can accommodate 12 hospice guests (single/family room). Relatives can also stay at the hospice; Visits are possible around the clock.

Intensive cooperation between doctors, caretakers, pastoral workers, therapists, volunteers and relatives enables the guests of our hospice guests to live their lives in dignity and security to the last second.

What costs are incurred for the people being cared for?

A stay at CS Hospice Rennweg is essentially free of charge. Only a small fee, which is also charged in hospitals and required by law, will be charged. This fee amounts to €11.- to €19.- a day, depending on the person's health insurance. This amount will be charged only for the first 28 days of the person's stay per year. The remaining costs are financed by the health insurance and by donations.

The Mobile Palliative Team and the stationary palliative care unit collaborate extremely closely and are tightly intertwined - a rapid change from mobile care to the stationary palliative care unit and vice versa is therefore possible.

Hospice Team of Volunteers

The hospice team of volunteers cares for seriously ill people and their relatives in the CS Hospice Rennweg, hospital, nursing home or at home. They complete an introductory course for "Life, Death and Grief Support" and are accompanied by the coordinator. From fulfilling last wishes to simply being there for someone, the team provides valuable services. Volunteers are usually deployed for 2 to 3 hours per week, according to need and agreement. Hospice caretakers are part of a multi-professional team. A coordinator accompanies the volunteers in their work and provides training and supervision.

What costs are incurred for the people being cared for?

The services of the hospice team of volunteers or their coordination are financed exclusively through donations and sponsors.

Roter Anker (Red Anchor)

Roter Anker is another facility of CS Hospice Rennweg. It offers:

- Professional psychotherapeutic counseling and support for children, adolescents and their families who are facing the death of a loved one.
- A specialized school program for children and adolescents dealing with the end of life.

Children and adolescents who lose a loved one can take advantage of this accompaniment.

What costs are incurred for the people being looked after?

The psychotherapeutic accompaniment is free of charge and is financed exclusively through donations.

Accompaniment in mourning

Volunteer mourning companions, counselors, psychotherapists and a social worker appropriately offer accompaniment - individually or in groups - and give the many faces of grief space to be discussed: Guided family counseling groups, consultation and one-on-one talks, memorial service, etc. The offers of escort in mourning are open to all people.

What costs are incurred for the people being counseled?

All offers are free of charge and financed exclusively through donations.

Excursus: Children's Hospice MOMO

Vienna's mobile children's hospice MOMO, an initiative of CS Caritas Socialis (CS Hospice Rennweg), Caritas of the Archdiocese of Vienna and the mobile pediatric nursing MOKI Wien. In order to enable seriously ill children and adolescents to spend their remaining time at home with their families, the new children's hospice organizes the necessary support: medical and nursing care, psychological and social counseling, help for any siblings and relatives.

Further information: www.momo.wien

4.2 HOSPICE VS. PALLIATIVE UNIT

The palliative ward of the CS Hospice Rennweg belongs to the hospital of the Sisters of Mercy. However, it is guided by the hospice philosophy: every seriously ill person at the Palliative Unit of the CS Hospice Rennweg can stay until the end of life. The stay until the very end is financed, with the exception of the deductible in the hospital, thanks to donations and is free for the sick person. With its range of services, the CS Hospice Rennweg thus ensures professional care and pain therapy until the end of life.

4.3 FINANCING OF CS HOSPICE RENNWEG

The offers of the CS Hospice Rennweg are affordable for everyone. Thanks to the cooperation with the Hospital of the Merciful Sisters of Vienna, the support of the City of Vienna and the Vienna Social Fund, part of the costs are state-funded. Many donors and supporters enable financing of the remaining company.

- Donations make it possible to meet the high staffing needs necessitated by the care and support of seriously ill people, as well as
- to individually accompany terminally ill people regardless of their financial situation. This allows us to respond to personal needs and desires that enhance quality of life and well-being.



Bank details for donations:

CS CARITAS SOCIALIS PRIVATSTIFTUNG		
Bank	BIC	IBAN
Erste Bank	GIBAATWW	AT27 2011 1800 8098 0900

Online donations (German): www.cs.at/spenden

4.4 HOSPICE CULTURE AND MAIEUTICS

CS Caritas Socialis stands for a responsible approach with people, even more so at the end of their life. The focus of care is the relationship with the residents. Hospice culture and maieutics are the pillars of work when dealing with chronically ill people at CS Caritas Socialis.

Hospice culture means professional human accompaniment in the last phase of life and a careful handling of ethical issues. Maieutics is experience-oriented care and puts the feelings and needs of the hospice guests in the foreground.

These offers are free of charge for the people that are cared for. Palliative care services are funded through donations.

5 Care and Support

"Being cared for in dignity – living on one's own "
OUR MISSION

The CS Caritas Socialis offers integrated care and support from a single source for elderly and chronically ill people. Starting from care at home through day centers for senior citizens to 24-hour care in the living areas of CS Caritas Socialis, we have it all.

People with different ailments have different needs in terms of care. The deciding factor for the choice of the institution, whether it be specialized dementia care or integrative accompaniment, is always the situation of the diseased person. At CS Caritas Socialis, people are accompanied and cared for in the integrative geriatric day center or in the geriatric long-term care, due to the different manifestations and stages of dementia. Again, this depends on their current situation and on which living environment better meets their needs.

5.1 FOCUS ON DEMENTIA

Special facilities for people with dementia are standard in Europe. Considering new scientific discoveries, CS Caritas Socialis has created groundbreaking facilities for people with dementia in Austria.

Alzheimer's Day Centers

Individualized care in a group of 10 to 12 people gives people with dementia a sense of security and appreciation. Responsible employees are specially trained. Visits to the day center also support and relieve relatives in everyday life.

Once to five times a week, people with Alzheimer's disease or other forms of severe dementia visit the CS Day Center for seniors.

Residential Communities

The residential communities are an alternative and familiar residential and care form for people with dementia. Care of the residents is organized around the clock. 7 to 8 residents live in a shared apartment in single rooms, which are furnished with their own furniture. Kitchen, bathrooms, toilets, laundry facilities and terraces/patios are shared. A prerequisite for admission to a shared flat is a specialist medical certificate (evidence of a form of dementia).

- Normal everyday life as a form of therapy

Residents are accompanied and supported in coping with everyday life. They join house-keeping in tasks such as, for example, cooking, cleaning up and shopping, according to their personal wishes and physical abilities. Participation in social life shall continue to be maintained. Everyday normality is enabled through the support of a professional care team. This allows for a self-determined life in a family-like environment.

Dementia living areas/long-term care

In each of the centers, CS Caritas Socialis offers a well-equipped living area for people with dementia. In the living areas, the best possible sense of well-being is provided to the residents, all while taking the necessary safety measures into account. The balance between withdrawal and community is important to prevent physical and mental overload. The residents are accompanied through their own respective worlds, thus strengthening the self-esteem of each individual. Relatives are included as essential reference persons. The nursing and care personnel sensitively react to acute and chronic pain and provide pain relief.

Dementia companions

Voluntary dementia companions are competent, specially trained interlocutors for people with dementia and their relatives. They see their commitment as a contribution to the mission of increasing participation of people with dementia in our society. They accompany affected persons and their relatives at home and in the special dementia areas at CS.

5.2 FOCUS ON MULTIPLE SCLEROSIS

The MS Day Center and the Neurological Long-Term Care Unit are parts of CS Rennweg.

MS day center

The MS Day Center is unique in Europe and offers opportunities to combine therapy, psychosocial support and community time.

People with multiple sclerosis visit the MS Day Center for:

- Preservation and optimization of their individual quality of life
- Physio therapy and occupational therapy
- Social integration into a community of like-minded people
- Relieving their caregiving relatives.

Equipment: 400 m² of floor space with a large and well-equipped therapy room (lectern, couches, bars, vibration plate, etc.), a single therapy room for physiotherapy or occupational therapy; an occupational therapy room with various equipment, a therapy kitchen, a workshop and dining room and lounges; barrier-free access to the garden, a roof terrace and the cafeteria.

Multiple sclerosis long-term care

CS Caritas Socialis cares for people with MS and similar neurological diseases. A specially trained team ensures support and care according to the resources and needs of the residents. 24/7 help, advice and support from our team is readily available which means residents can relax and focus on their symptoms.

Residents are supported in their autonomy, in dealing with their limitations and coping with the disease. Relatives are important and valuable in providing help and support. Everyday life is geared towards preserving as many abilities as possible. While giving residents the choice of a self-determined daily structure, they are particularly supported in the fields of personal hygiene, nutrition

management, mobility and leisure activities. Life in the MS living area is characterized by a family-like atmosphere and a stable environment.

Facilities: Personal care rooms (partly with terrace), two dining rooms, a living room, two therapy rooms with standing desks, standard and arm bike, Bobath therapy bed; Barrier-free access to the garden, the roof terrace and the cafeteria.

The neurological long-term care unit and home care collaborate closely with the MS Day Center, ensuring optimal transfer between CS's various facilities.



Anerkannte Einrichtung nach den
Förderrichtlinien des Fonds Soziales Wien,
gefördert aus Mitteln der Stadt Wien.



6 Families and Children

6.1 CS KINDERGARTEN

Children with all their needs and desires are at the center of work in the CS Kindergarten. They are accompanied in an important part of their journey into adult life.

Group forms in the CS Kindergarten

- Baby groups (1.5 to 3 years old)
- Kindergarten group (3 to 6 years old)
- Family group (2 to 6 years old)

Intergenerational learning in the program "Old and Young"

Through contact with the residents, the children learn to become familiar with the behavior of older people. They playfully learn to consider older, often frail people. Fears of illnesses or disabilities are effectively reduced and important knowledge is collected through the stories the elderly often tell. Senior citizens regularly rediscover their own hidden talents by supporting children in their development. Through the familiar encounter between "old and young", CS enables generations to maintain and nurture a healthy dialogue.

CS Aid and counseling facilities for socially disadvantaged people

Social aid and counseling service, counseling for women and families.

The multi-professional team of consultants offers free advice and long-term support in the following areas:

- Social counseling
- Financial problems
- Material bridging assistance (e.g., clothing)
- Problems at the workplace
- homelessness
- Counseling
- pregnancy counseling
- Relationship issues
- Couples or marital problems
- Conflicts in the family / social environment

6.2 CS HOME FOR MOTHER AND CHILD (MUKI)

Having protection when there is none left. CS House for Mother and Child provides transitional housing for 16 single mothers with up to three children. The mother lives with her children in a separated residential unit.

The multi-professional team consisting of social workers and a psychotherapist helps these women develop future perspectives for their lives and the ones of their children. The aim of the stay is to enable the women to lead an independent life once again after possibly years of abuse. In addition to the intensive support provided by one of the four female employees, volunteers play a vital role as well.

7 Overview of facilities at CS Caritas Socialis

7.1 HOSPICE AND PALLIATIVE CARE – 01/717 53-3220

CS Hospice Rennweg Oberzellergasse 1, 1030 Vienna

- Counseling Center
- Mobile Palliative Team
- Stationary Palliative Care Unit
- Hospice Team of Volunteers
- Roter Anker (Red Anchor)
- Accompaniment in Mourning
- Children's Hospice MOMO (Cooperation of Caritas, CS Caritas Socialis and MOKI)

7.2 CARE AND SUPPORT – 01/717 53-3800

CS Counseling Service for Dementia and Alzheimer's Oberzellergasse 1, 1030 Vienna

INTEGRATIVE CARE AND SUPPORT

- | | |
|-------------------------------------|--|
| • CS Care at Home | in every Viennese district |
| • Living at CS | Pramergasse 7, 1090 Wien |
| • CS Day Centers for Seniors | Oberzellergasse 1, 1030 Vienna
Pramergasse 7, 1090 Vienna
Mackgasse 1, 1230 Vienna |

- **Residential Areas/Stationary Care** Oberzellergasse 1, 1030 Vienna
Pramergasse 7, 1090 Vienna
Mackgasse 1, 1230 Vienna

BETREUUNG FÜR MENSCHEN MIT DEMENZ

- **CS Care at Home** in every Viennese district
- **Alzheimer's Day Centers** Oberzellergasse, 1030 Vienna
Pramergasse 7, 1090 Vienna
Mackgasse 1, 1230 Vienna
- **CS Living Communities** Jane-Tilden-Gasse 3, 1210 Vienna
Häckelstraße 4, 1230 Vienna
- **Residential Areas/Stationary Care** Oberzellergasse 1, 1030 Vienna
Pramergasse 7, 1090 Vienna
Mackgasse 1, 1230 Vienna

MULTIPLE SCLEROSIS CARE

- **CS Care at Home** in every Viennese district
- **MS Day Center** Oberzellergasse 1, 1030 Vienna
- **MS Residential Areas/Stationary Care** Oberzellergasse 1, 1030 Vienna

FAMILIES AND CHILDREN

- **CS Kindergarten** Landstraßer Hauptstraße 146/10, 1030 Vienna
Müllnergasse 29, 1090 Vienna
- **Social Aid and Counseling Service** Pramergasse 12/1, 1090 Vienna
- **CS Home for Mother and Child (MUKI)** Müllnergasse 29, 1090 Vienna

8 Milestones at CS

- | | |
|-----------------------|---|
| October 2023 | Opening of CS Kalksburg after 2 years of construction |
| October 2023 | 2x 1 st place & 1x 2 nd place at HR Award of German-speaking area |
| September 2023 | All CS facilities are awarded with E-Qalin Award |
| June 2023 | 2 nd place "Wirtschaft hilft" ("Economy helps") |
| May 2023 | 3 rd place Adgar Award for Hospice Campaign |

April 2023	Top Company Award
December 2022	1 st place ICMA Award 2022 for the annual report 2021
November 2022	1 st place Best Recruiters Award
October 2022	Top 10 best work place Award 2022
October 2022	1 st place HR Award 2022
October 2022	1 st place in Gewista Out of home Award for the campaign "Let's take the power out of black"
September 2022	3 rd place in EFFIE Award for the campaign "Let's take the power out of black"
June 2022	equal celebration at CS Kalksburg: Shell completed and roof created
June 2022	3 rd place in ADGAR Award: best print ad: Let's take the power out of black
June 2022	first-time nomination for Vamp Award in the category: low budget, great effect
2022	opening of Hospice Verena
2022	CS Pramergasse 25 years anniversary
2022	CS is one of the most popular employers for the fourth time in a row
November 2021	2 nd place in Best Recruiters Award 2021/22
November 2021	Groundbreaking and laying of the foundation stone for CS Kalksburg care center
October 2021	2 nd place in Fundraising Award 2021 for the campaign "Let's take the power out of black"
August 2021	2 nd place in Gewista – Out of home – Award
April 2021	Start of construction site #morespace Kalksburg

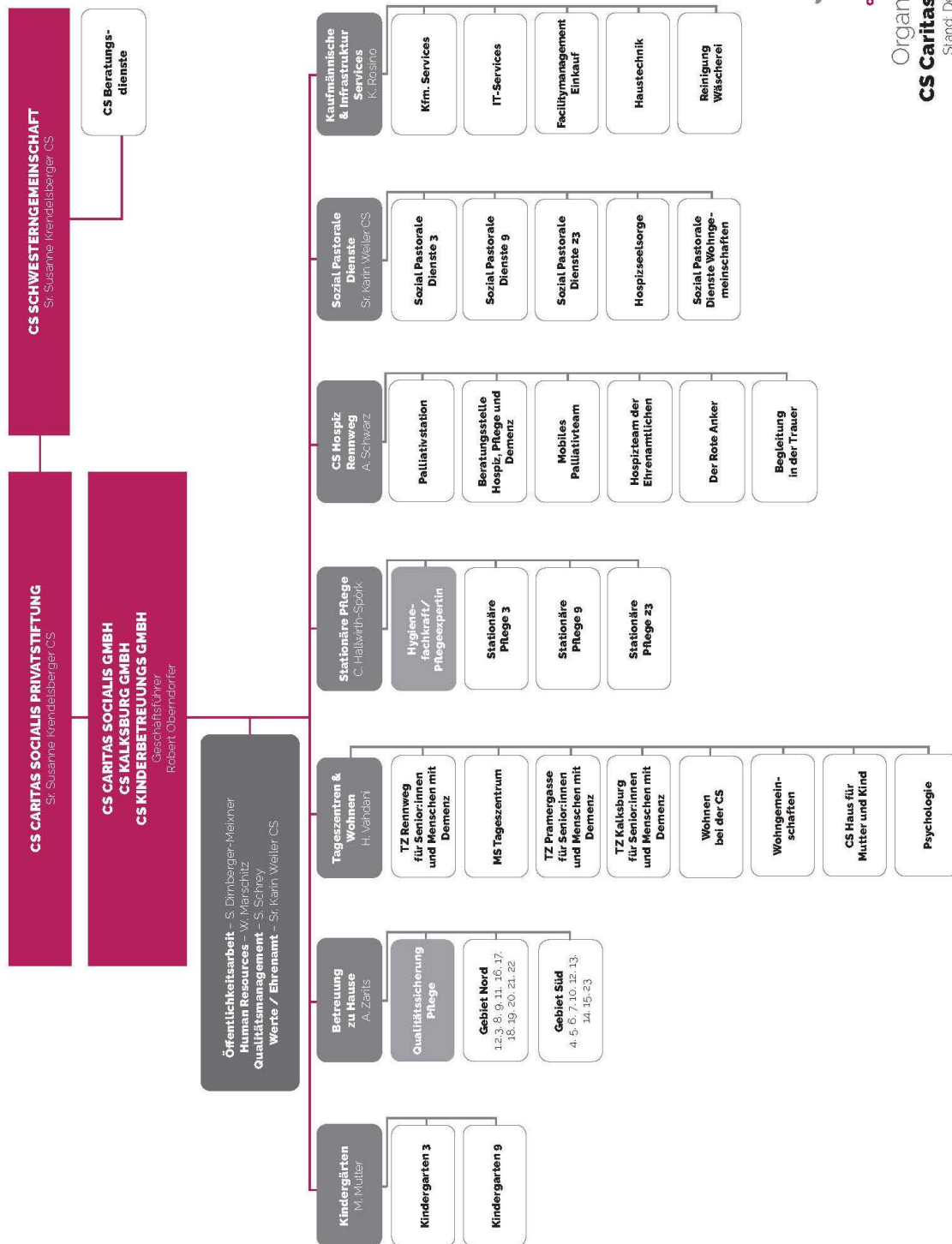
March 2021	1 st place in the Hildegard Teuschl Award for special achievements in hospice culture and palliative care to the organization "hospice culture and palliative care in mobile nursing and care (HPC mobile) continues to work", in which CS Caritas Socialis is involved along with three other organizations
March 2021	Cs Caritas Socialis is one of the most popular employers 2021
2020/21	awarded silver for the Best Recruiters Award
September 2020	opening of the newly designed CS day center at Pramergasse
July 2020	Cs Caritas Socialis is one of the most popular employers 2020
November 2019	Innovation Price Teleios – 2 nd place in habitants category for the volunteer project "Lebensraum Bett"
October 2019	100-year anniversary of the CS sister company "People. Life. Strengths." Festival worship with Archbishop Christoph Cardinal Schönborn
November 2018	Effie in Silver for Campaign "Hospice needs #moreSpace"
October 2018	Campaign "Hospice needs #moreSpace" wins Fundraising Award
September 2018	CS Hospice Rennweg is awarded the Prince Franz Josef of Liechtenstein Award
June 2018	Bank Austria Social Award 2018
March – December 2018	Renovation of CS Hospice Rennweg (#moreSpace)
September 2017	The project "HPC-Mobil – Hospice Culture and Palliative Care in Mobile Care" wins the third health award, awarded by the city of Vienna
August 2017	The project "Dementia-friendly 9 th district" is founded
May 2017	Children's book and animated audiobook-app "Annas Mama ist super" is published
May 2017	Hildegard Burjan-Memorial at Vienna City Hall is revealed

December 2016	New CS Corporate Video is uploaded at www.cs.at/csfilm
November 2016	New centralized location for CS Care at Home at Ungargasse 64-66, 1030 Vienna
March 2016	CS Pramergasse, CS Kalksburg and both CS Living Communities are awarded the quality certificate for retirement homes and nursing homes in Austria (NQZ)
November 2015	Children's book and animated audiobook-app "Anna und die beste Oma der Welt" wins the Teleios Award in the category "employees"
September 2015	The project "Dementia-friendly third district" wins third place at the health award of the city of Vienna in the category "Living healthily in one's neighborhood and district"
June 2015	Hildegard-Burjan-Steile in Vienna's St. Stephens Cathedral is revealed
May 2015	CS Caritas Socialis ist Austria's best employer in the health and social sector
May 2015	CS Rennweg and CS Hospice Rennweg are 20 years old!
November 2014	Dementia-project of CS Caritas Socialis receives the "Award of Orders 2014"
July 2014	Caritas Socialis GmbH, CS Care at Home GmbH and CS Care and Social Center Rennweg GmbH are merged into CS Caritas Socialis GmbH
February 2014	CS Living Communities for people with receive Care-Management-Award
November 2013	Hildegard-Teuschl-Award for the development of the so-called ethical resident meetings at CS Caritas Socialis
March 2013	Grand opening of MOMO – Mobile Children's Hospice Vienna (a cooperation of Caritas of the Archdiocese Vienna, CS Caritas Socialis and MOKI Wien)
January 2012	Beatification of Hildegard Burjan, founder of Caritas Socialis in St. Stephen's Cathedral in Vienna.

April 2008	City Councilor Mag. ^a Sonja Wehsely inaugurates the 1st Austrian residential community for people with dementia in Liesing.
April 2004	CS care and social centers Rennweg, Pramergasse, Kalksburg are the first institutions in Vienna that implement the nursing model of maieutics. Developed by Prof. dr. Cora van der Kooij, maieutics (experience-oriented care), is specially adapted for the care of people with dementia.
March 2004	Inauguration of the Mobile Hospice Rennweg in cooperation with Fonds Soziales Wien (FSW).
2003	Establishment of CS Caritas Socialis Charitable Private Foundation and incorporation of the various GmbHs into the foundation.
June 1998	Pope John Paul II visits CS Hospice Rennweg and gives a speech to all who live and work in the world of illness and suffering.
1997	Opening of the newly built CS Care and Social Center Pramergasse (Pramergasse 7) with special focus on Alzheimer care and an Alzheimer's Day Center. Relocation of CS Social Center from Porzellangasse to Pramergasse. New offer: Living at CS.
March 1995	Commissioning of CS Care and Social Center Rennweg, full development of the integrative concept: outpatient, semi-stationary as well as inpatient nursing and care facilities, offers for multiple sclerosis patients (nursing home and day center) and a hospice for the terminally ill in their last phase of life.
October 1994	Official opening of the CS Care and Social Center Kalksburg in Vienna's 23 rd district. Outpatient, semi-stationary as well as inpatient nursing and care facilities, offers for multiple sclerosis patients (nursing home and day center).
1992	Foundation of Caritas Socialis GmbH; first CS Day Center; Start of CS Care at Home and home nursing.

- 1989** With the help of prize money donated by the Prince of Liechtenstein for "family work and modern ways in social policy", the first mobile hospice is launched.
- 1960** Establishment of the first CS Kindergarten in Pramergasse.
- 1919** Hildegard Burjan founds Caritas Socialis (CS) as a spiritual community of women in the Catholic Church with the goal to address social needs.

9 Organizational Chart (German)



10 Legal Organizational Chart (German)

